

HYDE

MULTI-CONFIGURATION BOOTH

www.planscape.co.uk



HYDE: MULTI-CONFIGURATION BOOTH

Hyde is a multi-configurable booth which delivers plenty of space to build a comfortable collaboration or meeting zone.

Built with sturdy wood panels and finished with foam and fabrication, Hyde is naturally sound absorbent, keeping your space defined.

HYDE

MATERIALS

FRAME CONSTRUCTION

FSC® certified plywood

Furniture grade fibreboard

FOAM

Upholstered panels

Combustion Modified High Resilience Foam (CMHR)

GLASS FRONT

25 mm single glazed system

Metal frame with door lock

Finish: Black (RAL 9011)

TABLES

25 mm laminated MFC table top

50 mm tubular steel upright

Finish: Satin Silver

Chrome round steel plate - HY-3T table only

POLICY

Pledge manufacture in the United Kingdom and are a true manufacturer producing wooden, steel and upholstered products at our site in Leighton Buzzard.

We are committed to the efficient use of energy and continually review our processes to reduce environmental impact seeking to utilise technologies which minimise energy and material consumption in our products and services.

CERTIFICATION

Pledge is ISO9001 & ISO14001 certified, guaranteeing quality and environmental management standards are met.

Furniture Industry Sustainability Programme (FISP)

Furniture Industry Research Association (FIRA)

Forest Stewardship Council® (FSC®)

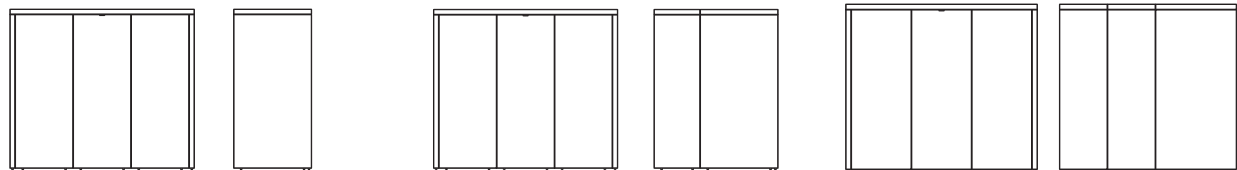
OPERATION

Pledge offers a 5-year warranty on structural components. Fabrics are covered by the manufacturers' guarantee.

These terms apply to Pledge Seating used only in general office environments during normal working hours and subject to fair wear and tear. Terms for seating used 24/7 application are available on request.

Our full terms concerning warranties can be found in our Seating Price Guide under terms and conditions section 9.

HYDE



HY-2 | 2 Seat Booth.

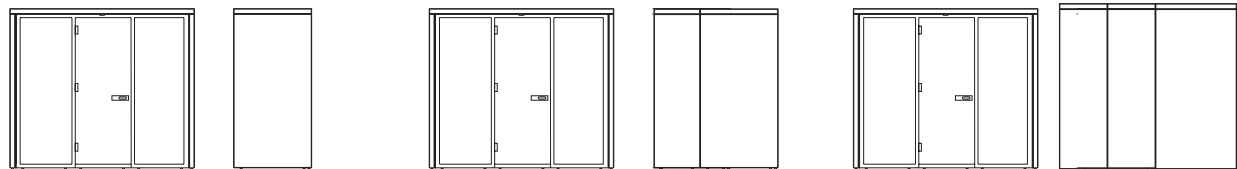
Overall Height	2115 mm
Overall Width	2408 mm
Overall Depth	1030 mm
Seat Height	- mm
Seat Depth	- mm
Weight	88 kg

HY-4 | 4 Seat Booth.

Overall Height	2115 mm
Overall Width	2408 mm
Overall Depth	1786 mm
Seat Height	- mm
Seat Depth	- mm
Weight	128 kg

HY-6 | 6 Seat Booth.

Overall Height	2115 mm
Overall Width	2408 mm
Overall Depth	2542 mm
Seat Height	- mm
Seat Depth	- mm
Weight	168 kg



HYD-2 | 2 Seat Booth with Glass Front.

Overall Height	2115 mm
Overall Width	2408 mm
Overall Depth	1030 mm
Seat Height	- mm
Seat Depth	- mm
Weight	253 kg

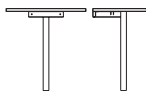
HYD-4 | 4 Seat Booth with Glass Front.

Overall Height	2115 mm
Overall Width	2408 mm
Overall Depth	1786 mm
Seat Height	- mm
Seat Depth	- mm
Weight	293 kg

HYD-6 | 6 Seat Booth with Glass Front.

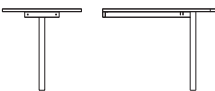
Overall Height	2115 mm
Overall Width	2408 mm
Overall Depth	2542 mm
Seat Height	- mm
Seat Depth	- mm
Weight	333 kg

HYDE



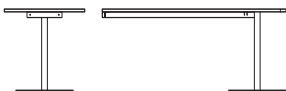
HY-T1 | Single Table.

Overall Height	720 mm
Overall Width	700 mm
Overall Depth	470 mm
Seat Height	- mm
Seat Depth	- mm
Weight	11 kg



HY-T2 | Double Table.

Overall Height	720 mm
Overall Width	700 mm
Overall Depth	1000 mm
Seat Height	- mm
Seat Depth	- mm
Weight	15 kg



HY-T3 | Treble Table.

Overall Height	720 mm
Overall Width	700 mm
Overall Depth	1600 mm
Seat Height	- mm
Seat Depth	- mm
Weight	30 kg

HYDE

TABLE TOP FINISH



White (WH)



Grey (GY)



Black (BK)



Walnut (WL)

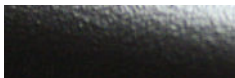


Light Oak (LO)

METAL LEG FINISH



Silver Painted (Standard)



Black (B) (RAL 9011)

OPTIONS

Hyde Joining Roof Panel (HY-R)

Spotlights (SL)

TV Bracket (HY-TVB)

Proton & Puma Power & Data options available

Two Tone Upholstery 10% upcharge (2T)

Twin row of dots Window Film Option (RD)

Twin row of squares Window Film Option (RS)

1200 mm Frosted Band Window Film Option (FB)

NOTES

All Fabric Group prices are based on screen fabric with a width of 1700 mm.

HY-3T Disc Base only available as Chrome as standard.

ENVIRONMENTAL

Recycled Content: 12% (estimated)

Recyclable Content: 98%