

KEY

CONFERENCE & TRAINING

www.planscape.co.uk



KEY: CONFERENCE & TRAINING

The design of Key has made it one of the most impressive chairs of its type and an ideal solution for conference and training applications.

Two back sizes and the option of a four leg chair or stacking cantilever are available.

KEY

MATERIALS

BACK

Laminated pre-formed beech

SEAT (CANTILEVER)

Laminated pre-formed beech with black plastic under shroud

SEAT (LEG FRAME)

Laminated pre-formed beech with black linen under shroud

ARMS

Polypropylene pads

FOAM

Cold cure moulded, Combustion Modified High Resilience foam (CMHR)

CANTILEVER FRAME

Self arm frame

25 mm high tensile steel

Finish: Black (RAL9011)

LEG FRAME

Self arm frame

25 mm high tensile steel

Finish: Black (RAL9011)

FOUR STAR BASE

Polished aluminium four star base

Black nylon glides

POLICY

Pledge manufacture in the United Kingdom and are a true manufacturer producing wooden, steel and upholstered products at our site in Leighton Buzzard.

We are committed to the efficient use of energy and continually review our processes to reduce environmental impact seeking to utilise technologies which minimise energy and material consumption in our products and services.

CERTIFICATION

Pledge is ISO9001 & ISO14001 certified, guaranteeing quality and environmental management standards are met.

Furniture Industry Sustainability Programme (FISP)

Furniture Industry Research Association (FIRA)

Forest Stewardship Council® (FSC®)

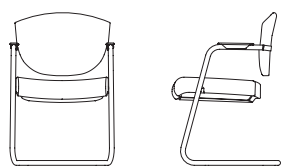
OPERATION

Pledge offers a 5-year warranty on structural components. Fabrics are covered by the manufacturers' guarantee.

These terms apply to Pledge Seating used only in general office environments during normal working hours and subject to fair wear and tear. Terms for seating used 24/7 application are available on request.

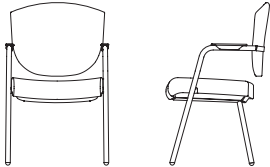
Our full terms concerning warranties can be found in our Seating Price Guide under terms and conditions section 9.

KEY



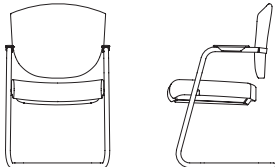
KEY20B | Cantilever Chair.

Overall Height	840 mm
Overall Width	560 mm
Overall Depth	600 mm
Seat Height	450 mm
Back Width	490 mm
Weight	10.1 kg



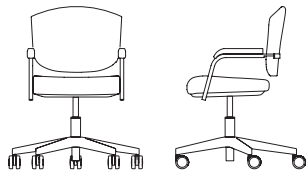
KEY21B | 4 Leg Chair.

Overall Height	840 mm
Overall Width	560 mm
Overall Depth	600 mm
Seat Height	450 mm
Back Width	490 mm
Weight	10.3 kg



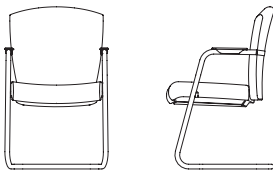
KEY22B | Stackable Cantilever Chair.

Overall Height	840 mm
Overall Width	560 mm
Overall Depth	600 mm
Seat Height	450 mm
Back Width	490 mm
Weight	10.1 kg



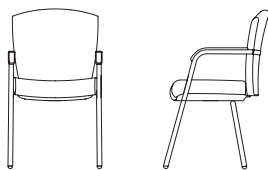
KEY23C/5S | Swivel Chair.

Overall Height	840 mm
Overall Width	570 mm
Overall Depth	610 mm
Seat Height	460-590 mm
Back Width	490 mm
Weight	12.1 kg



KEY30B | Cantilever Chair.

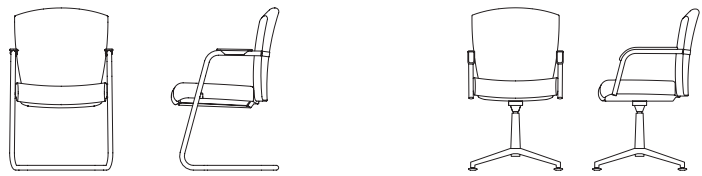
Overall Height	870 mm
Overall Width	560 mm
Overall Depth	600 mm
Seat Height	450 mm
Back Width	490 mm
Weight	12.1 kg



KEY31B | 4 Leg Chair.

Overall Height	870 mm
Overall Width	560 mm
Overall Depth	600 mm
Seat Height	450 mm
Back Width	490 mm
Weight	12.4 kg

KEY



KEY32B | Stackable Cantilever Chair.

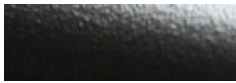
Overall Height	870 mm
Overall Width	560 mm
Overall Depth	600 mm
Seat Height	450 mm
Back Width	490 mm
Weight	12.1 kg

KEY33C | 4 Star Swivel Chair.

Overall Height	870 mm
Overall Width	570 mm
Overall Depth	610 mm
Seat Height	460 mm
Back Width	490 mm
Weight	14.1 kg

KEY

METAL FRAME FINISH



Black (B) (Standard)



Silver RAL 9006 (P)



Chrome (C)

WOODEN FINISH

N/A

OPTIONS

KEY23C/KEY33C - Polished 5 star aluminium base with castors including chrome gas lift (5S)

KEY23C/KEY23C - Polished aluminium base with glides including memory return gas lift and height adjustment (5S/AU)

Two tone upholstery 10% upcharge (2T)

NOTES

N/A

ENVIRONMENTAL

Recycled Content: 37% (estimated)

Recyclable Content: 98%